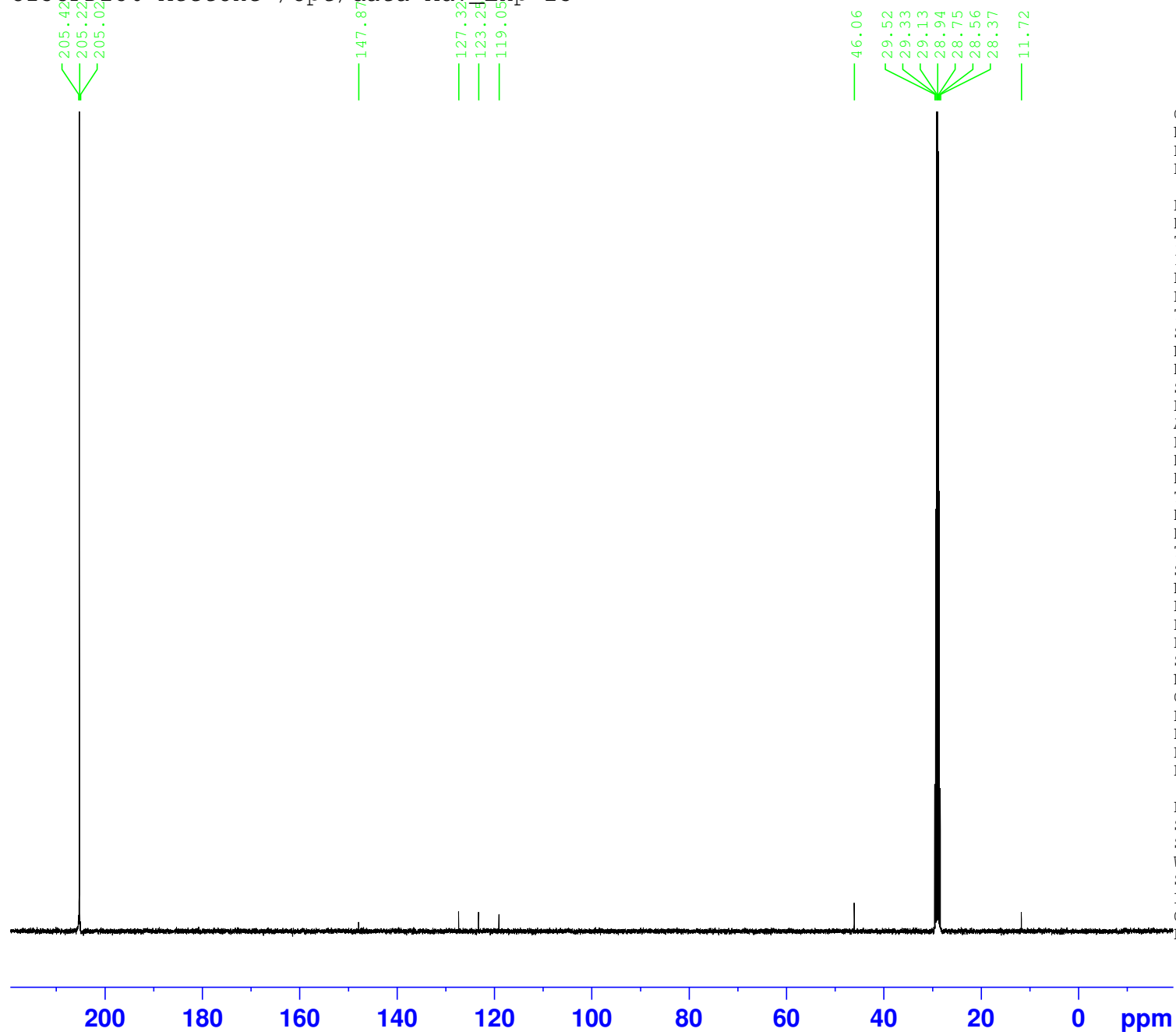


KW 3M
C13CPD256 Acetone /opt/data Adv_Exp 23



Current Data Parameters
NAME X_231204
EXPNO 71
PROCNO 1

F2 - Acquisition Parameters
Date_ 20231205
Time 5.43 h
INSTRUM aviii400
PROBHD Z108618_0305 (
PULPROG zgpg30
TD 65536
SOLVENT Acetone
NS 256
DS 4
SWH 24038.461 Hz
FIDRES 0.733596 Hz
AQ 1.3631488 sec
RG 2050
DW 20.800 usec
DE 6.50 usec
TE 300.0 K
D1 2.00000000 sec
D11 0.03000000 sec
TD0 1
SFO1 100.6404326 MHz
NUC1 13C
P0 3.27 usec
P1 9.80 usec
PLW1 50.11899948 W
SFO2 400.2016008 MHz
NUC2 1H
CPDPRG[2] waltz16
PCPD2 90.00 usec
PLW2 19.95299911 W
PLW12 0.36664000 W
PLW13 0.18442000 W

F2 - Processing parameters
SI 32768
SF 100.6303700 MHz
WDW EM
SSB 0
LB 1.00 Hz
GB 0
PC 1.40