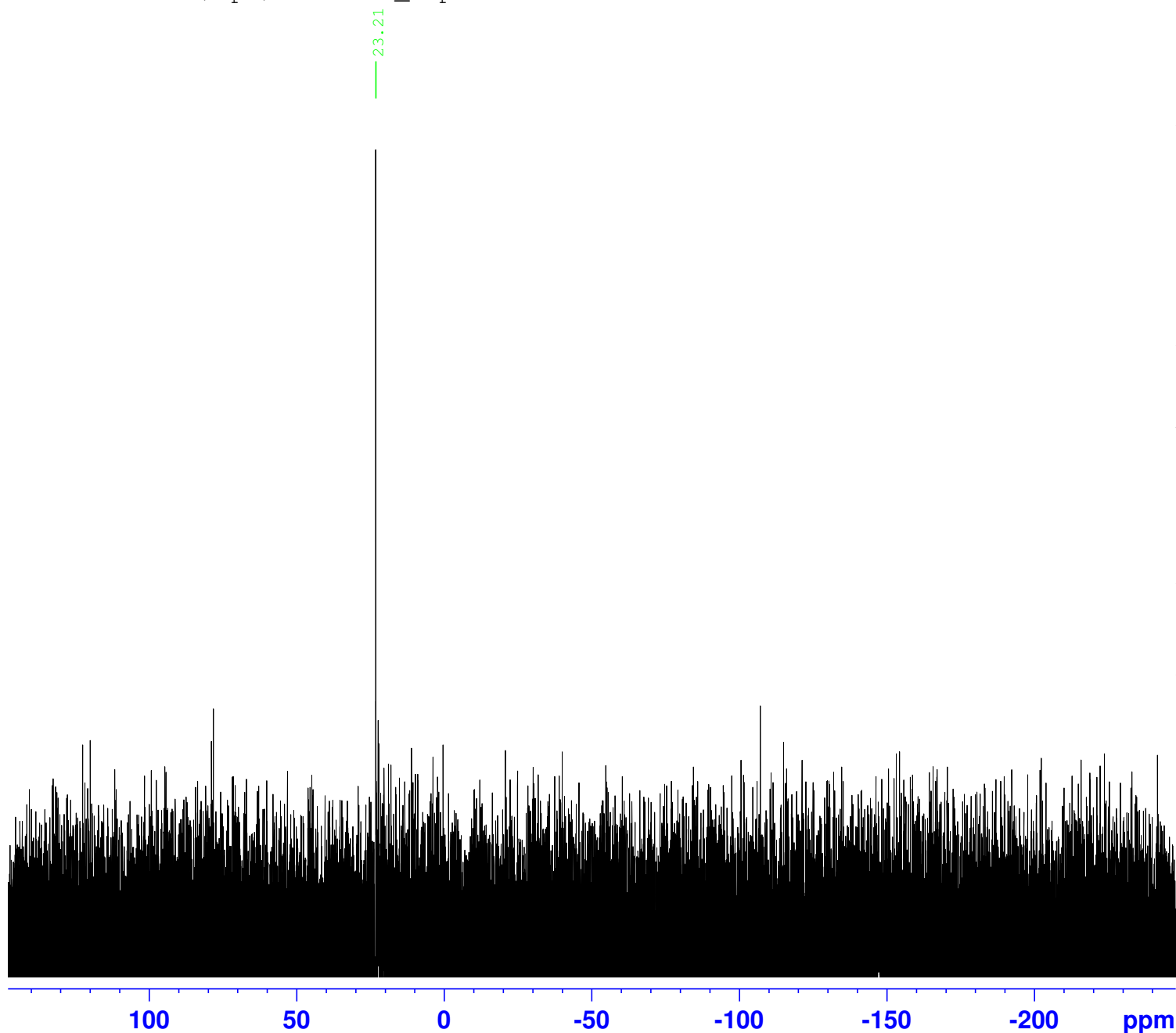


marouf comp 1
P31CPD CDCl3 /opt/data Adv_Exp 4



Current Data Parameters
NAME X_20190219
EXPNO 43
PROCNO 1

F2 - Acquisition Parameters
Date_ 20190219
Time 10.10 h
INSTRUM spect
PROBHD Z824801_0046 (
PULPROG zgpg30
TD 65536
SOLVENT CDCl3
NS 16
DS 4
SWH 64102.562 Hz
FIDRES 1.956255 Hz
AQ 0.5111808 sec
RG 200.25
DW 7.800 usec
DE 6.50 usec
TE 300.0 K
D1 2.00000000 sec
D11 0.03000000 sec
TD0 1
SFO1 162.0079729 MHz
NUC1 31P
P0 2.67 usec
P1 8.00 usec
PLW1 36.45100021 W
SFO2 400.2316009 MHz
NUC2 1H
CPDPRG[2] waltz16
PCPD2 90.00 usec
PLW2 20.00000000 W
PLW12 0.23714000 W
PLW13 0.11928000 W

F2 - Processing parameters
SI 32768
SF 162.0160737 MHz
WDW EM
SSB 0
LB 1.00 Hz
GB 0
PC 1.40

0.38 1.15 2.02 1.46 1.46 1.84 1.09 0.64 2.37 1.48 0.48 1.80 1.20 0.75 1.14 0.88 1.69 0.70 1.22 0.16 0.01 0.26 1.32 0.69 1.27 1.01 1.34 0.78 0.49 1.58 0.65 0.43 3.10 0.16 1.16 0.85 1.32 0.65 0.38 0.64 1.17 0.65 0.64 0.79 0.34 0.64