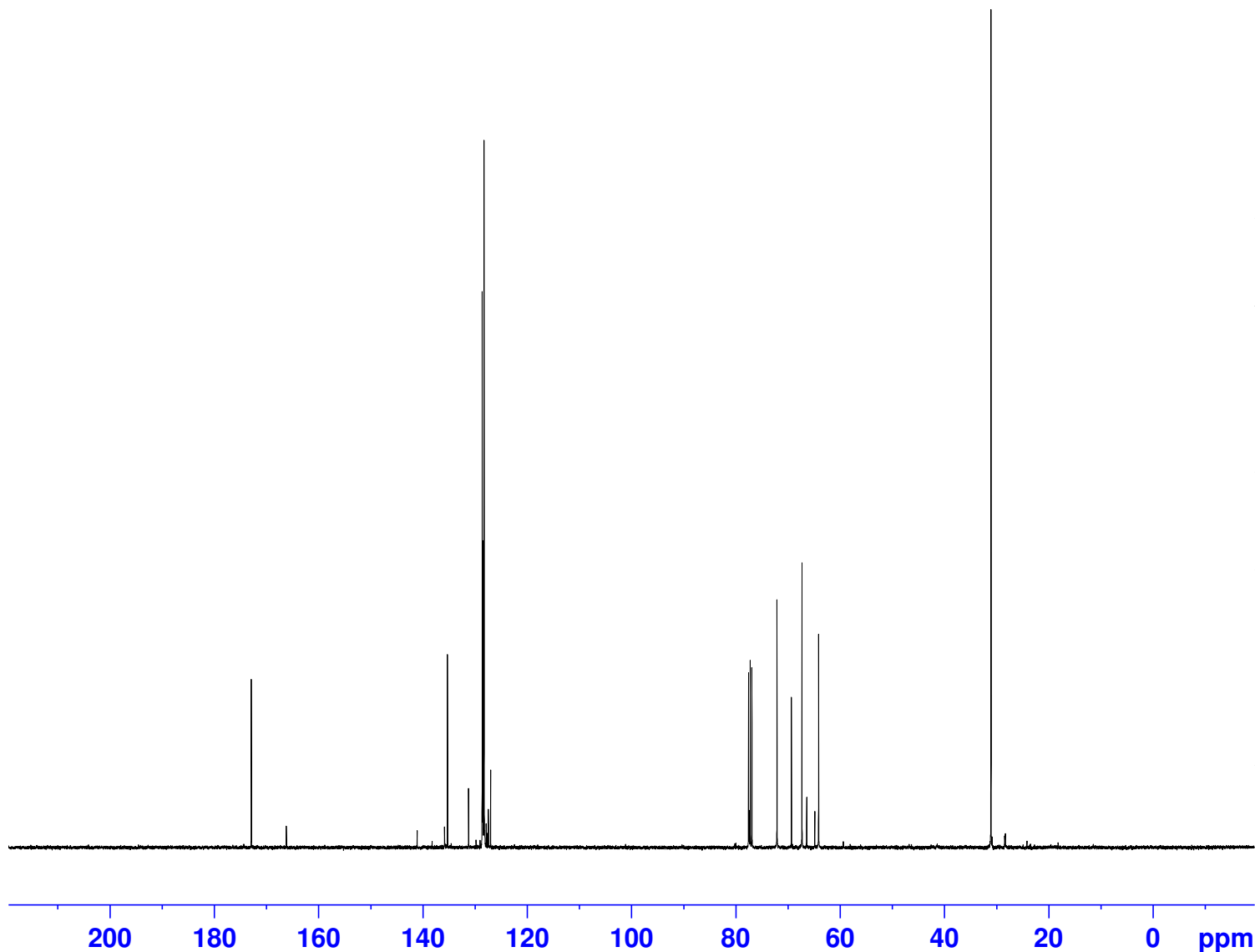


hajrah OC1
C13CPD256 CDC13 /opt/data Adv_Exp_23

172.87
166.15
141.07
138.21
135.83
135.25
134.53
131.22
129.79
129.01
128.61
128.58
128.45
128.43
128.35
128.27
128.23
127.83
127.67
127.41
126.98
80.15
79.94
77.53
77.41
77.21
76.89
72.08
69.31
67.30
66.38
64.83
64.10
59.36
31.05
30.85
28.43
28.30
24.15
18.17



Current Data Parameters
NAME X_191029
EXPNO 81
PROCNO 1

F2 - Acquisition Parameters
Date_ 20191029
Time 22.34 h
INSTRUM aviii400
PROBHD Z108618_0305 (
PULPROG zgpg30
TD 65536
SOLVENT CDC13
NS 256
DS 4
SWH 24038.461 Hz
FIDRES 0.733596 Hz
AQ 1.3631488 sec
RG 2050
DW 20.800 usec
DE 6.50 usec
TE 300.0 K
D1 2.00000000 sec
D11 0.03000000 sec
TD0 1
SFO1 100.6404326 MHz
NUC1 13C
P0 3.27 usec
P1 9.80 usec
PLW1 50.11899948 W
SFO2 400.2016008 MHz
NUC2 1H
CPDPRG[2] waltz16
PCPD2 90.00 usec
PLW2 19.95299911 W
PLW12 0.36664000 W
PLW13 0.18442000 W

F2 - Processing parameters
SI 32768
SF 100.6303700 MHz
WDW EM
SSB 0
LB 1.00 Hz
GB 0
PC 1.40