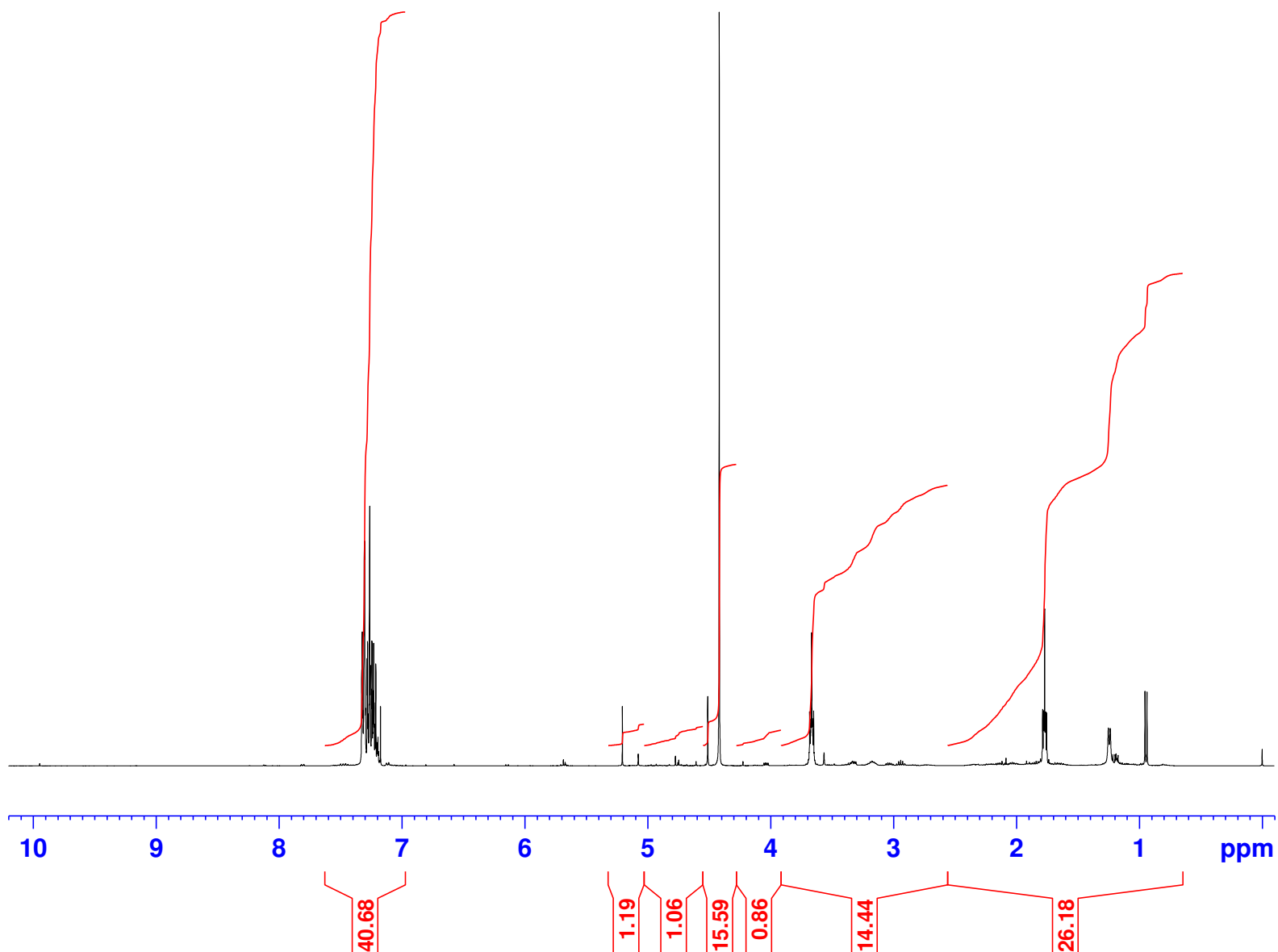


Amira crude 2  
PROTON.qm CDCl3 /opt/data Adv\_Exp 13



Current Data Parameters  
NAME X\_190219  
EXPNO 110  
PROCNO 1

F2 - Acquisition Parameters  
Date\_ 20190219  
Time 15.39 h  
INSTRUM aviii400  
PROBHD Z108618\_0305 (  
PULPROG zg30  
TD 65536  
SOLVENT CDCl3  
NS 16  
DS 0  
SWH 8223.685 Hz  
FIDRES 0.250967 Hz  
AQ 3.9845889 sec  
RG 80.6  
DW 60.800 usec  
DE 16.89 usec  
TE 300.0 K  
D1 1.00000000 sec  
TD0 1  
SFO1 400.2024714 MHz  
NUC1 1H  
P0 4.07 usec  
P1 12.20 usec  
PLW1 19.95299911 W

F2 - Processing parameters  
SI 65536  
SF 400.2000439 MHz  
WDW EM  
SSB 0  
LB 0.30 Hz  
GB 0  
PC 1.00