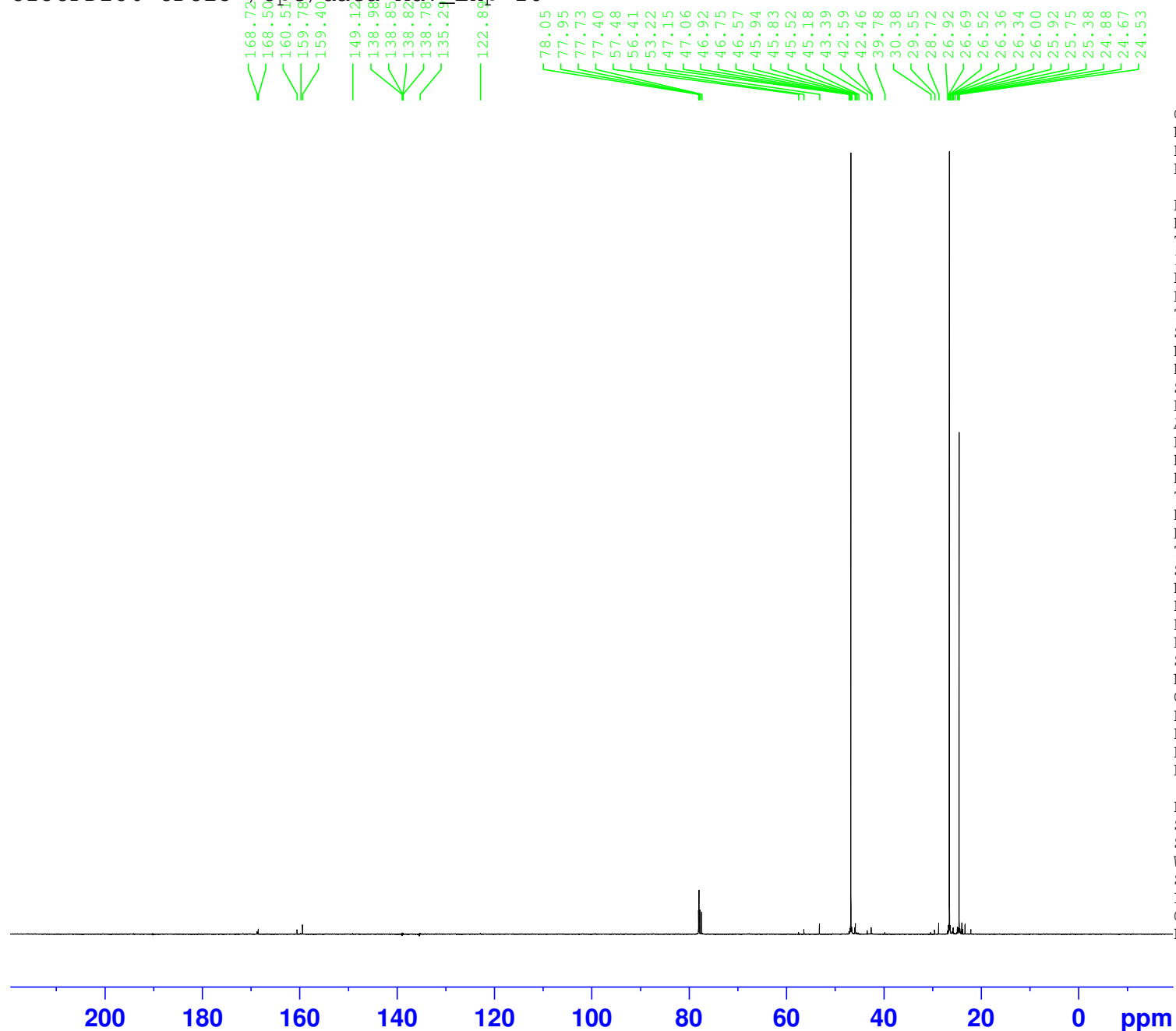


Part 2- pure product hd02
C13CPD256 CDC13 /opt/data Adv_Exp 18



Current Data Parameters
NAME X_20181107
EXPNO 101
PROCNO 1

F2 - Acquisition Parameters
Date_ 20181107
Time 16.05 h
INSTRUM spect
PROBHD Z824801_0046 (
PULPROG zgpg30
TD 65536
SOLVENT CDC13
NS 256
DS 4
SWH 24038.461 Hz
FIDRES 0.733596 Hz
AQ 1.3631488 sec
RG 200.25
DW 20.800 usec
DE 6.50 usec
TE 300.0 K
D1 2.00000000 sec
D11 0.03000000 sec
TD0 1
SFO1 100.6479773 MHz
NUC1 13C
P0 3.33 usec
P1 10.00 usec
PLW1 48.00000000 W
SFO2 400.2316009 MHz
NUC2 1H
CPDPRG[2] waltz65
PCPD2 90.00 usec
PLW2 20.00000000 W
PLW12 0.23714000 W
PLW13 0.11928000 W

F2 - Processing parameters
SI 32768
SF 100.6379135 MHz
WDW EM
SSB 0
LB 1.00 Hz
GB 0
PC 1.40