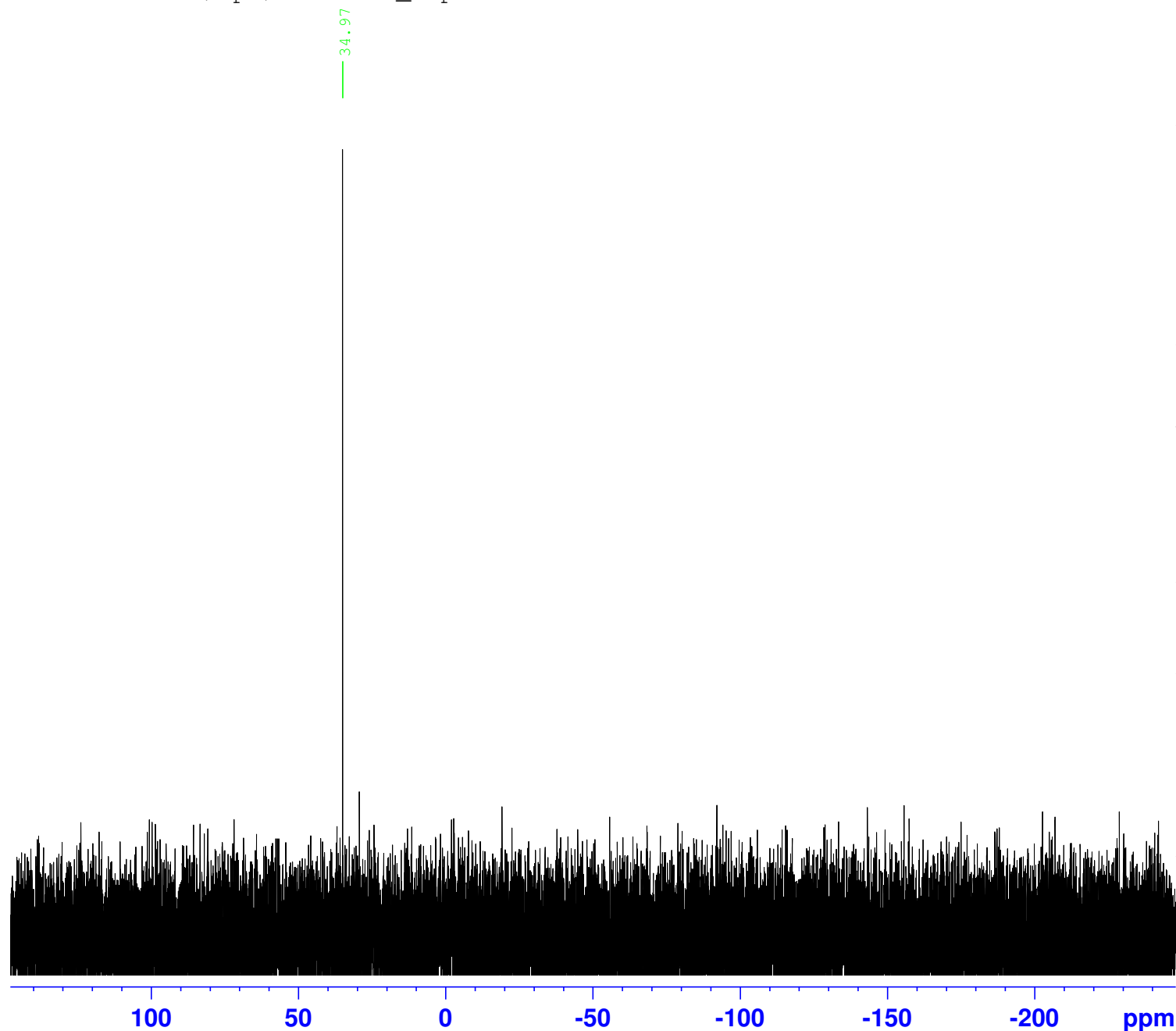


mb final 2
P31CPD CDC13 /opt/data Adv_Exp 4



Current Data Parameters
NAME X_20180920
EXPNO 212
PROCNO 1

F2 - Acquisition Parameters
Date_ 20180920
Time 15.20 h
INSTRUM spect
PROBHD Z824801_0046 (
PULPROG zgpg30
TD 65536
SOLVENT CDC13
NS 16
DS 4
SWH 64102.562 Hz
FIDRES 1.956255 Hz
AQ 0.5111808 sec
RG 200.25
DW 7.800 usec
DE 6.50 usec
TE 300.0 K
D1 2.00000000 sec
D11 0.03000000 sec
TD0 1
SFO1 162.0079729 MHz
NUC1 31P
P0 2.67 usec
P1 8.00 usec
PLW1 36.45100021 W
SFO2 400.2316009 MHz
NUC2 1H
CPDPRG[2] waltz16
PCPD2 90.00 usec
PLW2 20.00000000 W
PLW12 0.23714000 W
PLW13 0.11928000 W

F2 - Processing parameters
SI 32768
SF 162.0160737 MHz
WDW EM
SSB 0
LB 1.00 Hz
GB 0
PC 1.40

1.56
0.86
0.67
0.25
1.21
1.28
8.32
3.29
0.76
0.09
4.07
0.58
2.39
1.07
0.07
1.60
1.01
1.65
0.53
0.13
0.77
0.47
1.01
2.05
0.12
1.43
1.90
0.07
1.33
0.66
0.22
0.84
0.54
1.42
0.89
1.39
1.30
1.02
2.10
1.18
1.22
0.46
0.51
0.92
3.36
0.80