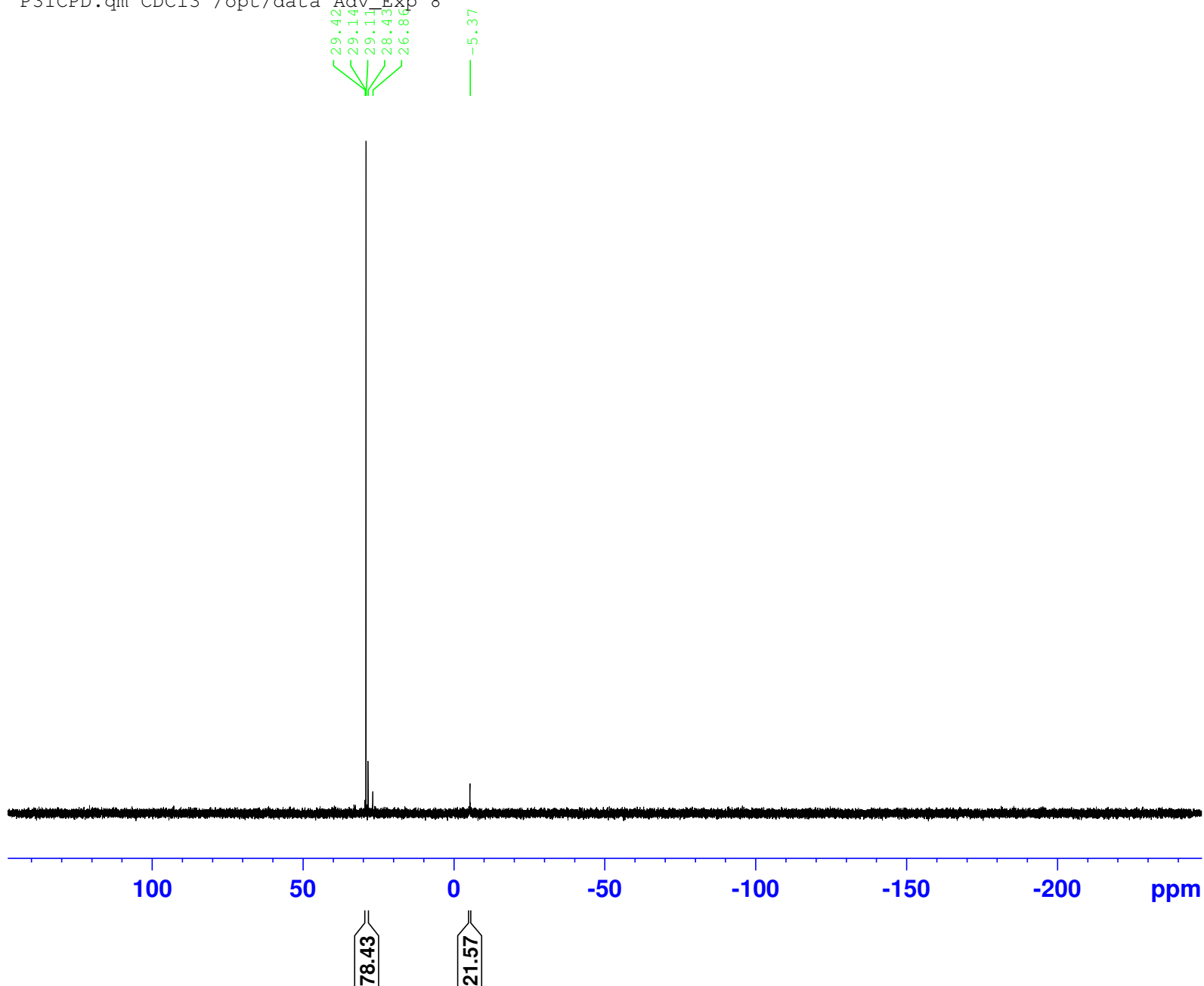


MB. finished
P31CPD.qm CDC13 /opt/data Adv_Exp 8



Current Data Parameters
NAME X_180919
EXPNO 12
PROCNO 1

F2 - Acquisition Parameters
Date_ 20180919
Time 17.54 h
INSTRUM aviii400
PROBHD z108618_0305 (
PULPROG zgig
TD 128198
SOLVENT CDC13
NS 32
DS 2
SWH 64102.562 Hz
FIDRES 1.000056 Hz
AQ 0.9999444 sec
RG 1620
DW 7.800 usec
DE 7.13 usec
TE 300.0 K
D1 2.00000000 sec
D11 0.03000000 sec
TD0 1
SFO1 161.9958293 MHz
NUC1 31P
P1 11.30 usec
PLW1 19.05500031 W
SFO2 400.2024012 MHz
NUC2 1H
CPDPRG[2] waltz16
PCPD2 90.00 usec
PLW2 19.95299911 W
PLW12 0.36664000 W

F2 - Processing parameters
SI 262144
SF 162.0039290 MHz
WDW EM
SSB 0
LB 1.00 Hz
GB 0
PC 1.40