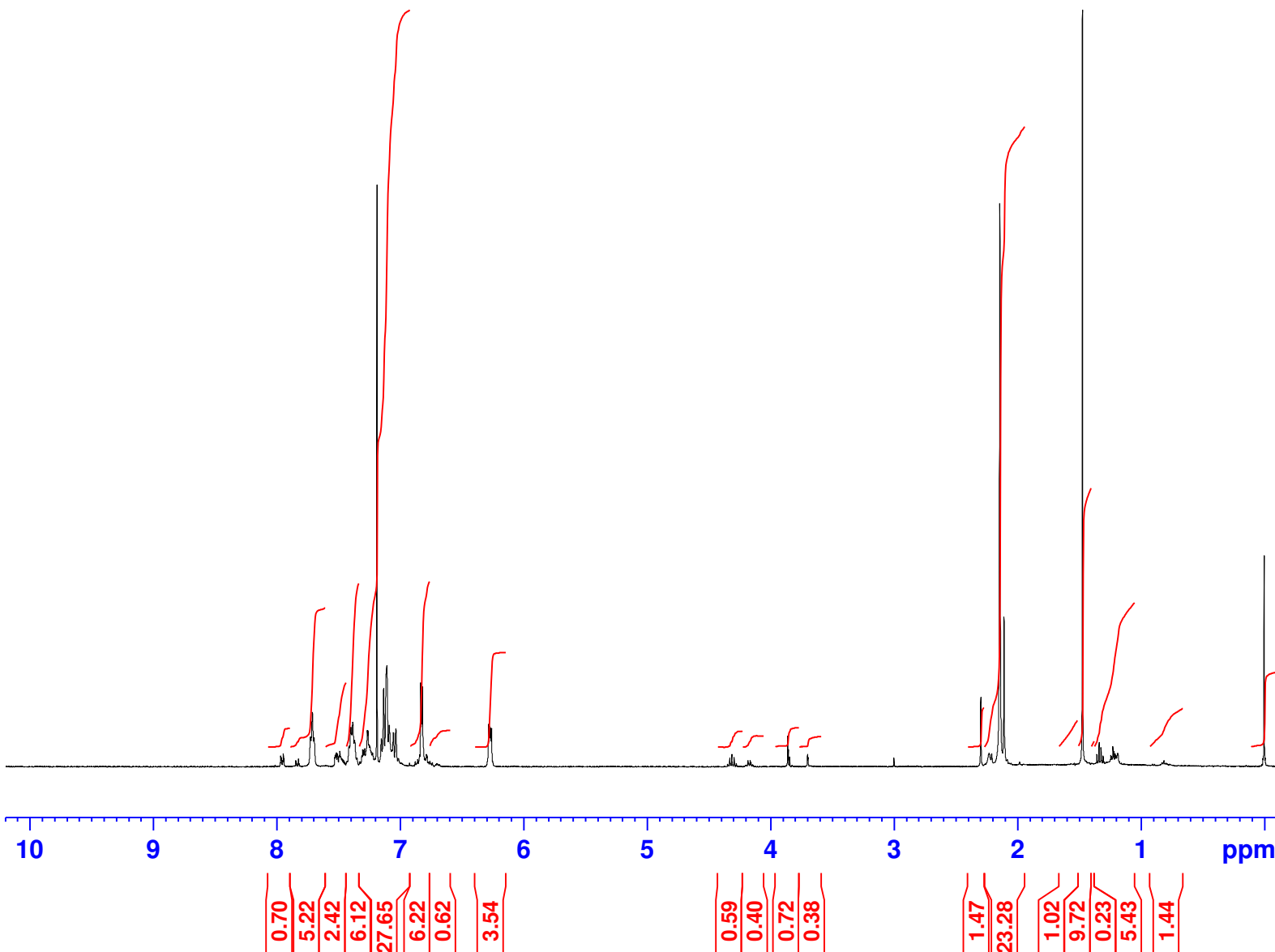


sa na part b  
PROTON.qm CDC13 /opt/data Adv\_Exp 22



Current Data Parameters  
NAME X\_170222  
EXPNO 240  
PROCNO 1

F2 - Acquisition Parameters  
Date\_ 20170222  
Time 17.30  
INSTRUM aviii400  
PROBHD 5 mm PABBO BB-  
PULPROG zg30  
TD 65536  
SOLVENT CDC13  
NS 16  
DS 0  
SWH 8223.685 Hz  
FIDRES 0.125483 Hz  
AQ 3.9845889 sec  
RG 406  
DW 60.800 usec  
DE 16.23 usec  
TE 300.0 K  
D1 1.00000000 sec  
TD0 1

===== CHANNEL f1 =====  
SFO1 400.2024714 MHz  
NUC1 1H  
P1 13.09 usec  
PLW1 12.58899975 W

F2 - Processing parameters  
SI 65536  
SF 400.2000383 MHz  
WDW EM  
SSB 0  
LB 0.30 Hz  
GB 0  
PC 1.00