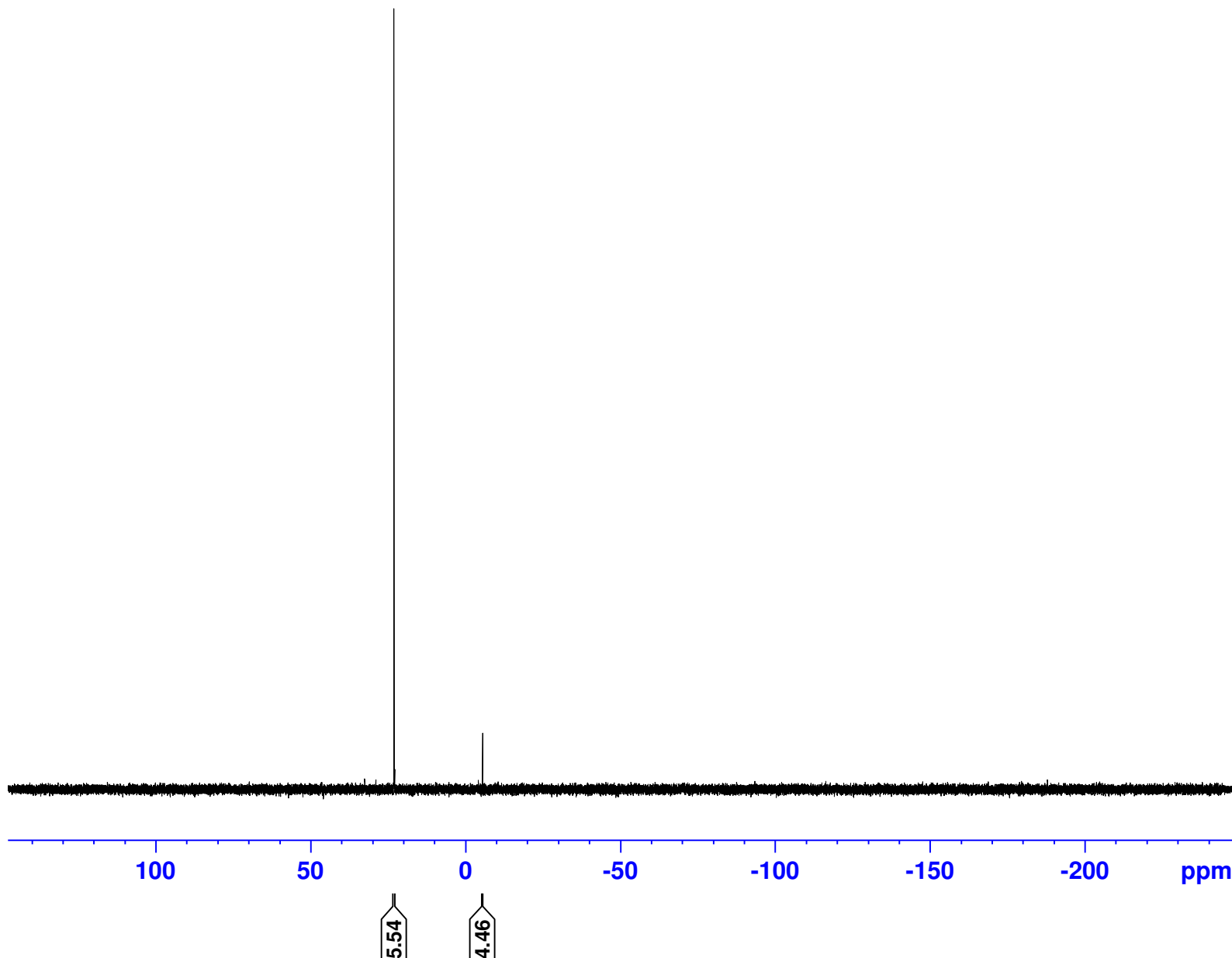


AS1
P31CPD.qm CDC13 /opt/data Adv_Exp 6

32.73
23.32
23.25
23.17
23.05
-5.37



Current Data Parameters
NAME X_170222
EXPNO 172
PROCNO 1

F2 - Acquisition Parameters
Date_ 20170222
Time 15.36
INSTRUM aviii400
PROBHD 5 mm PABBO BB-
PULPROG zgig
TD 128198
SOLVENT CDCl3
NS 32
DS 2
SWH 64102.562 Hz
FIDRES 0.500028 Hz
AQ 0.9999444 sec
RG 1620
DW 7.800 usec
DE 7.13 usec
TE 300.0 K
D1 2.00000000 sec
D11 0.03000000 sec
TD0 1

===== CHANNEL f1 =====
SFO1 161.9958293 MHz
NUC1 31P
P1 11.30 usec
PLW1 19.05500031 W

===== CHANNEL f2 =====
SFO2 400.2024012 MHz
NUC2 1H
CPDPRG[2] waltz16
PCPD2 90.00 usec
PLW2 12.58899975 W
PLW12 0.26631001 W

F2 - Processing parameters
SI 262144
SF 162.0039290 MHz
WDW EM
SSB 0
LB 1.00 Hz
GB 0
PC 1.40