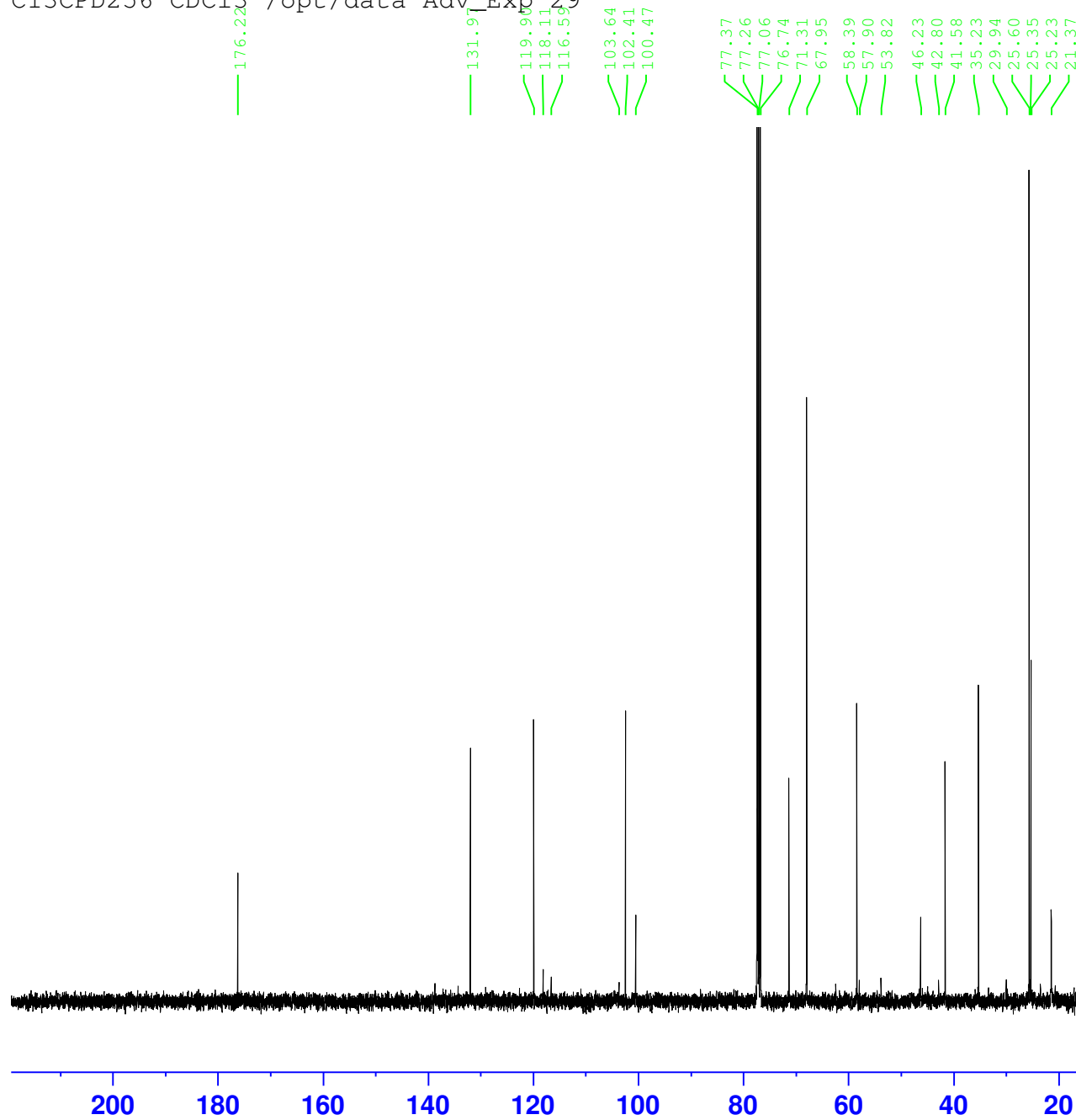


Crude 1 C NMR  
C13CPD256 CDC13 /opt/data Adv\_Exp\_29



Current Data Parameters  
NAME X\_170112  
EXPNO 61  
PROCNO 1

F2 - Acquisition Parameters  
Date\_ 20170112  
Time 18.03  
INSTRUM aviii400  
PROBHD 5 mm PABBO BB-  
PULPROG zgpg30  
TD 65536  
SOLVENT CDC13  
NS 256  
DS 4  
SWH 24038.461 Hz  
FIDRES 0.366798 Hz  
AQ 1.3631488 sec  
RG 1620  
DW 20.800 usec  
DE 6.50 usec  
TE 300.0 K  
D1 2.00000000 sec  
D11 0.03000000 sec  
TD0 1

===== CHANNEL f1 =====  
SFO1 100.6404326 MHz  
NUC1 13C  
P1 9.00 usec  
PLW1 50.11899948 W

===== CHANNEL f2 =====  
SFO2 400.2016008 MHz  
NUC2 1H  
CPDPRG[2] waltz16  
PCPD2 90.00 usec  
PLW2 12.58899975 W  
PLW12 0.26631001 W  
PLW13 0.21571000 W

F2 - Processing parameters  
SI 32768  
SF 100.6303700 MHz  
WDW EM  
SSB 0  
LB 1.00 Hz  
GB 0  
PC 1.40