

BHS\_04

HNMR

CDC13

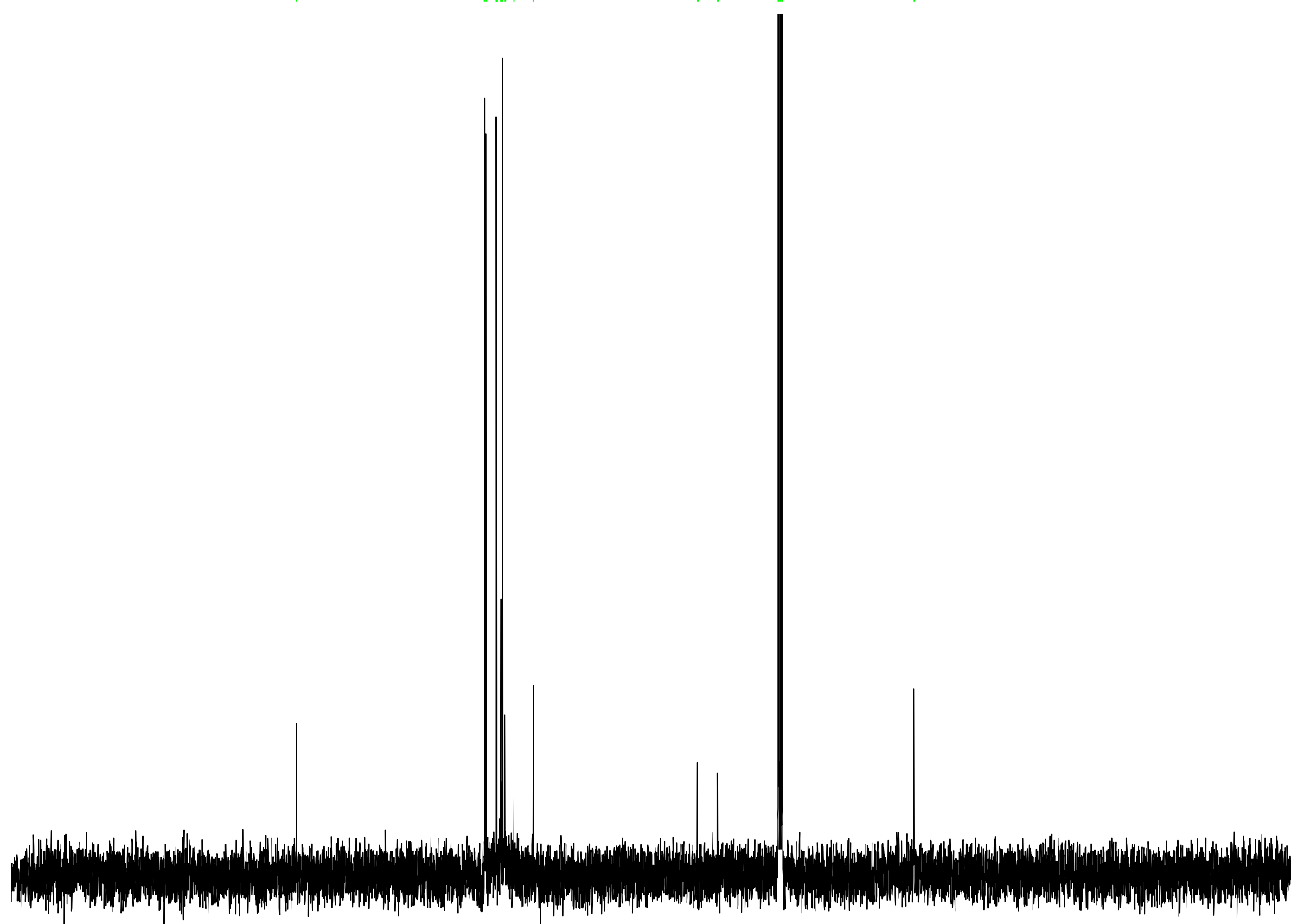
C13CPD256 CDC13 /opt/data/Adv\_Exp



131.75  
131.51  
129.53  
129.49  
128.77  
128.57  
128.45  
128.03  
126.33  
122.72

92.37  
88.64  
77.34  
77.02  
76.71

52.24



#### Current Data Parameters

NAME X\_170111  
EXPNO 381  
PROCNO 1

#### F2 - Acquisition Parameters

Date\_ 20170112  
Time 8.54  
INSTRUM aviii400  
PROBHD 5 mm PABBO BB-  
PULPROG zgpg30  
TD 65536  
SOLVENT CDC13  
NS 256  
DS 4  
SWH 24038.461 Hz  
FIDRES 0.366798 Hz  
AQ 1.3631488 sec  
RG 1820  
DW 20.800 usec  
DE 6.50 usec  
TE 300.0 K  
D1 2.00000000 sec  
D11 0.03000000 sec  
TD0 1

#### ===== CHANNEL f1 =====

SFO1 100.6404326 MHz  
NUC1 13C  
P1 9.00 usec  
PLW1 50.11899948 W

#### ===== CHANNEL f2 =====

SFO2 400.2016008 MHz  
NUC2 1H  
CPDPRG[2] waltz16  
PCPD2 90.00 usec  
PLW2 12.58899975 W  
PLW12 0.26631001 W  
PLW13 0.21571000 W

#### F2 - Processing parameters

SI 32768  
SF 100.6303700 MHz  
WDW EM  
SSB 0  
LB 1.00 Hz  
GB 0  
PC 1.40

200 180 160 140 120 100 80 60 40 20 0 ppm