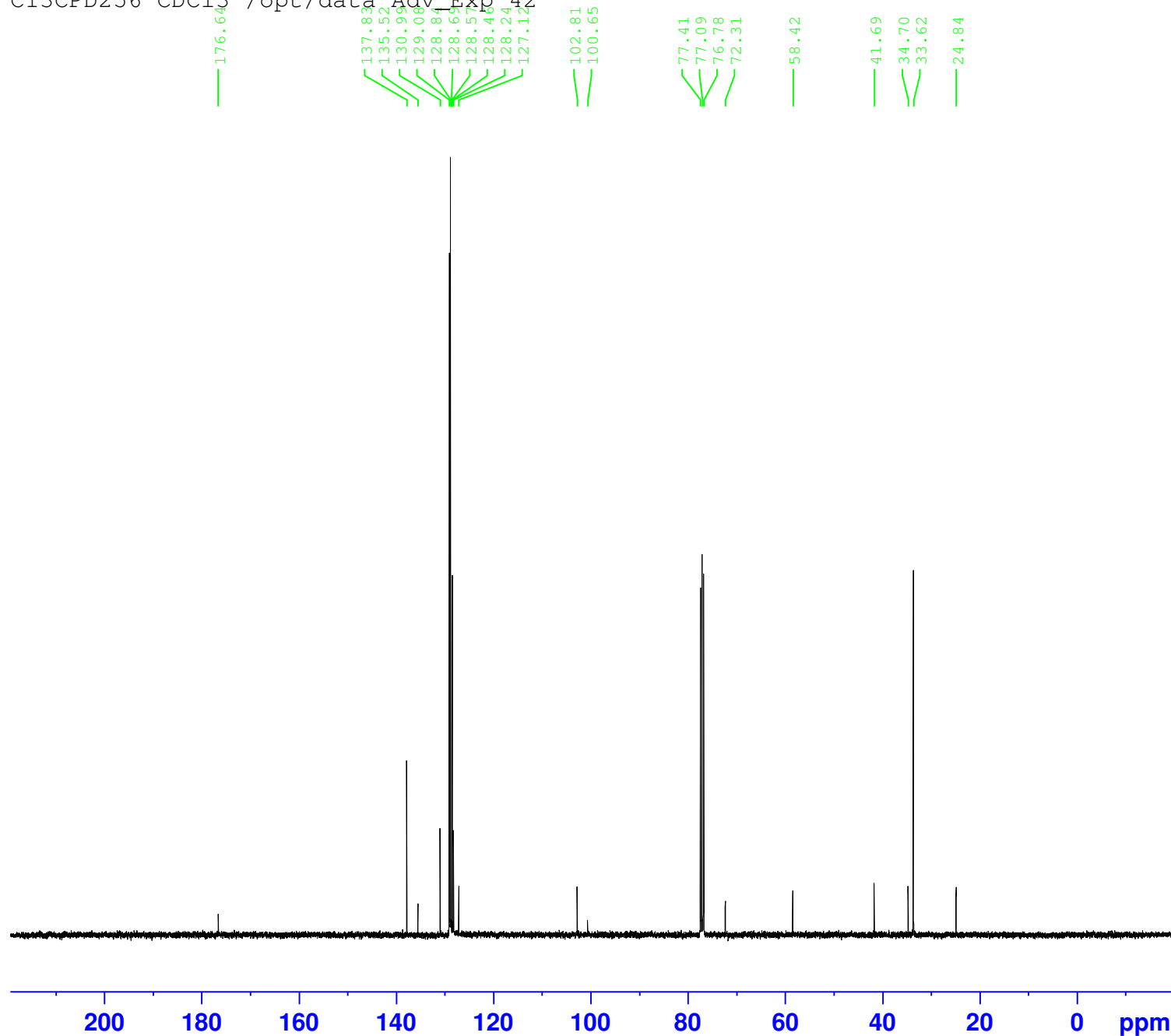


M.S.R. - Pure product 1- C NMR
 C13CPD256 CDC13 /opt/data Adv Exp 42



Current Data Parameters
 NAME X_170111
 EXPNO 351
 PROCNO 1

F2 - Acquisition Parameters
 Date_ 20170112
 Time 9.33
 INSTRUM aviii400
 PROBHD 5 mm PABBO BB-
 PULPROG zgpg30
 TD 65536
 SOLVENT CDC13
 NS 256
 DS 4
 SWH 24038.461 Hz
 FIDRES 0.366798 Hz
 AQ 1.3631488 sec
 RG 1820
 DW 20.800 usec
 DE 6.50 usec
 TE 300.0 K
 D1 2.00000000 sec
 D11 0.03000000 sec
 TD0 1

===== CHANNEL f1 =====
 SFO1 100.6404326 MHz
 NUC1 13C
 P1 9.00 usec
 PLW1 50.11899948 W

===== CHANNEL f2 =====
 SFO2 400.2016008 MHz
 NUC2 1H
 CPDPRG[2] waltz16
 PCPD2 90.00 usec
 PLW2 12.58899975 W
 PLW12 0.26631001 W
 PLW13 0.21571000 W

F2 - Processing parameters
 SI 32768
 SF 100.6303700 MHz
 WDW EM
 SSB 0
 LB 1.00 Hz
 GB 0
 PC 1.40