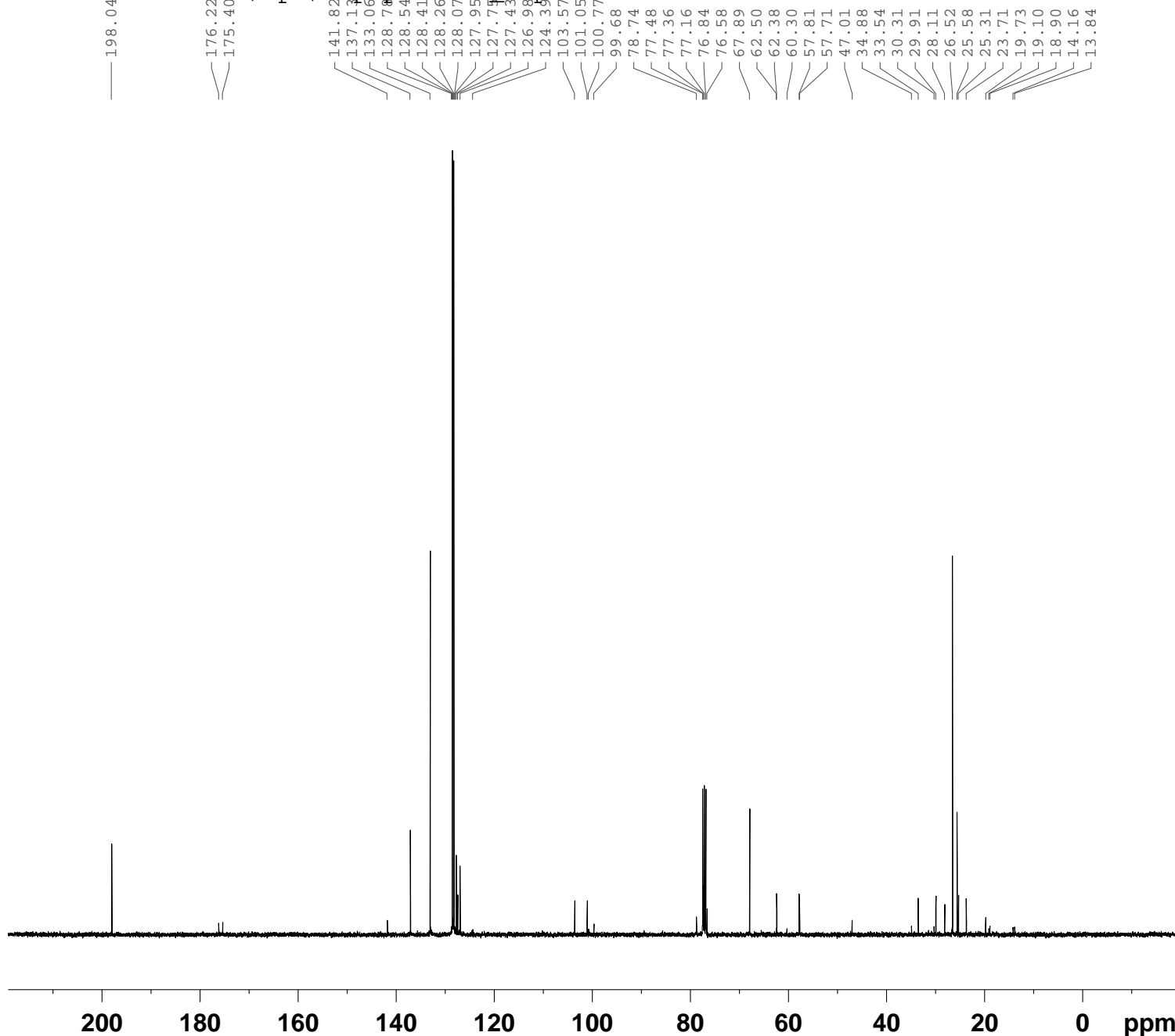


sandeep kaler part 4  
C13CPD256 CDC13 /opt/topspin Adv Exp 21



NAME X\_20160114  
EXPNO 331  
PROCNO 1  
Date\_ 20160114  
Time 23.14  
INSTRUM spect  
PROBHD 5 mm BBO BB-1H  
PULPROG zgpg30  
TD 65536  
SOLVENT CDC13  
NS 256  
DS 4  
SWH 23980.814 Hz  
FIDRES 0.365918 Hz  
AQ 1.3664756 sec  
RG 18390.4  
DW 20.850 usec  
DE 6.50 usec  
TE 303.0 K  
D1 2.00000000 sec  
D11 0.03000000 sec  
TD0 1

===== CHANNEL f1 =====  
NUC1 13C  
P1 8.90 usec  
PL1 6.00 dB  
SFO1 100.6479773 MHz

===== CHANNEL f2 =====  
CPDPRG2 waltz16  
NUC2 1H  
PCPD2 80.00 usec  
PL2 3.00 dB  
PL12 21.00 dB  
PL13 21.00 dB  
SFO2 400.2316009 MHz  
SI 32768  
SF 100.6379140 MHz  
WDW EM  
SSB 0  
LB 1.00 Hz  
GB 0  
PC 1.40