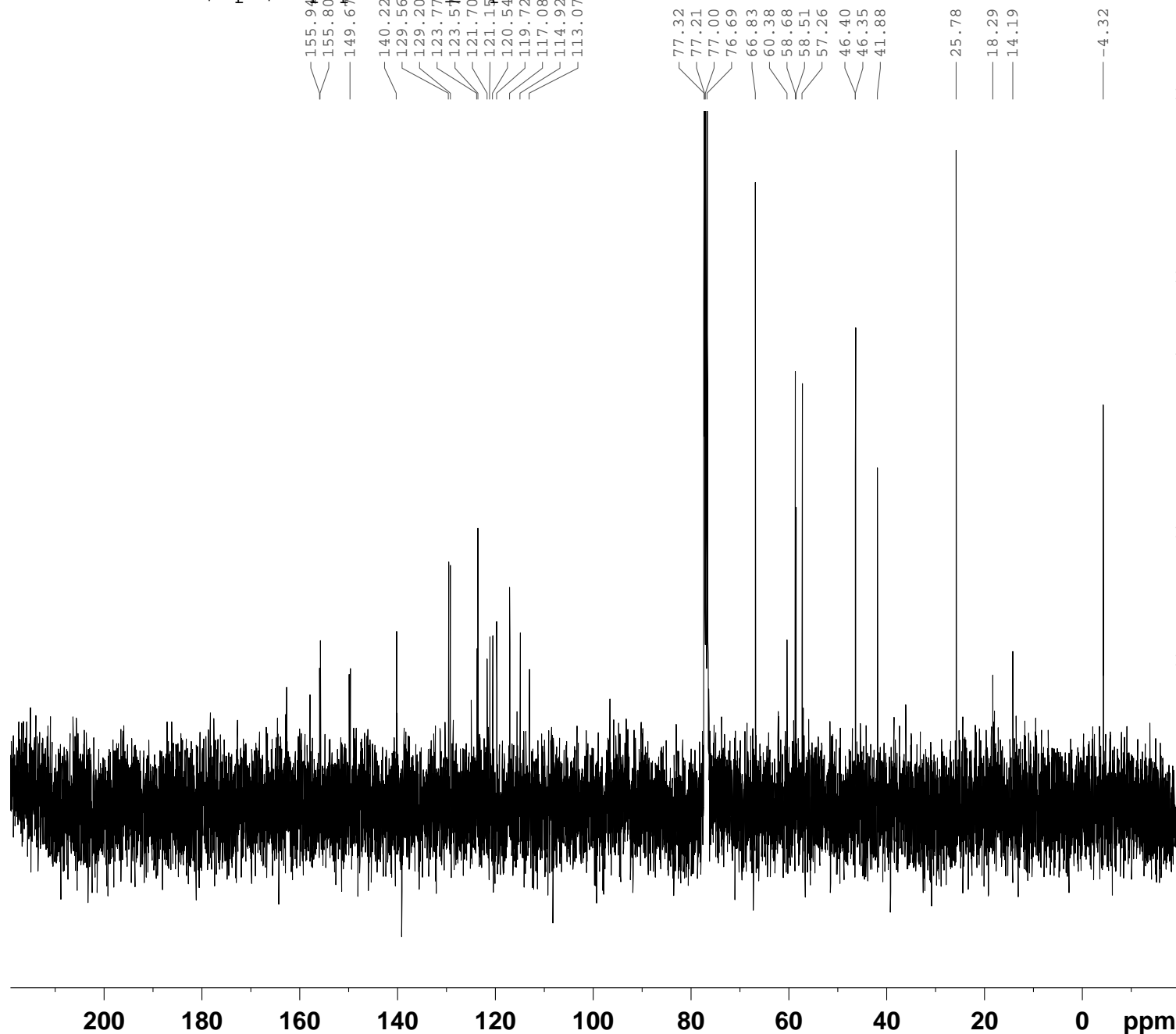


Aroosa\_Analogue\_pure\_5  
 C13CPD CDC13 /opt/topspin Adv Exp 42



```

NAME          X_20160113
EXPNO          301
PROCNO         1
Date_          20160114
Time           5.20
INSTRUM        spect
PROBHD         5 mm BBO BB-1H
PULPROG        zgpg30
TD             65536
SOLVENT        CDC13
NS             1024
DS             4
SWH            23980.814 Hz
FIDRES         0.365918 Hz
AQ            1.3664756 sec
RG            18390.4
DW            20.850 usec
DE            6.50 usec
TE            303.0 K
D1            2.00000000 sec
D11           0.03000000 sec
TD0           1

===== CHANNEL f1 =====
NUC1           13C
P1            8.90 usec
PL1           6.00 dB
SFO1          100.6479773 MHz

===== CHANNEL f2 =====
CPDPRG2        waltz16
NUC2           1H
PCPD2          80.00 usec
PL2           3.00 dB
PL12          21.00 dB
PL13          21.00 dB
SFO2          400.2316009 MHz
SI            32768
SF            100.6379140 MHz
WDW            EM
SSB            0
LB            1.00 Hz
GB            0
PC            1.40
  
```