

2016 - 11 - 07 - 170

C NMR

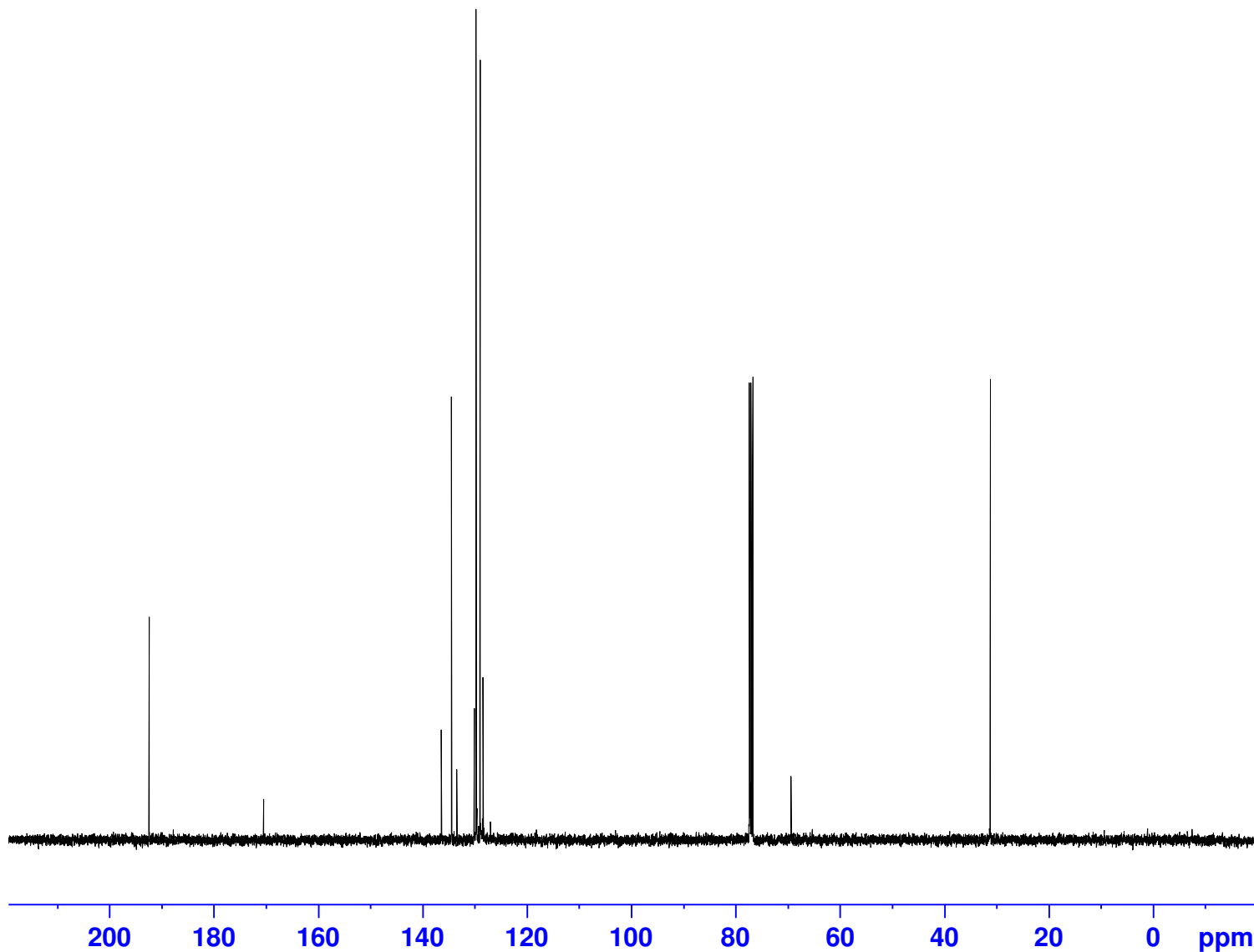
C13CPD256 CDC13 /opt/data/Adv_Exp_17



192.44
170.51
136.11
134.47
133.49
130.22
129.76
129.61
129.39
129.30
128.54
128.12
126.79

77.36
77.24
77.04
76.72
69.38

31.18



Current Data Parameters
NAME X_161111
EXPNO 171
PROCNO 1

F2 - Acquisition Parameters
Date_ 20161114
Time 11.46
INSTRUM aviii400
PROBHD 5 mm PABBO BB-
PULPROG zgpg30
TD 65536
SOLVENT CDC13
NS 256
DS 4
SWH 24038.461 Hz
FIDRES 0.366798 Hz
AQ 1.3631488 sec
RG 2050
DW 20.800 usec
DE 6.50 usec
TE 300.0 K
D1 2.00000000 sec
D11 0.03000000 sec
TD0 1

===== CHANNEL f1 =====
SFO1 100.6404326 MHz
NUC1 13C
P1 9.00 usec
PLW1 50.11899948 W

===== CHANNEL f2 =====
SFO2 400.2016008 MHz
NUC2 1H
CPDPRG[2] waltz16
PCPD2 90.00 usec
PLW2 12.58899975 W
PLW12 0.26631001 W
PLW13 0.21571000 W

F2 - Processing parameters
SI 32768
SF 100.6303700 MHz
WDW EM
SSB 0
LB 1.00 Hz
GB 0
PC 1.40