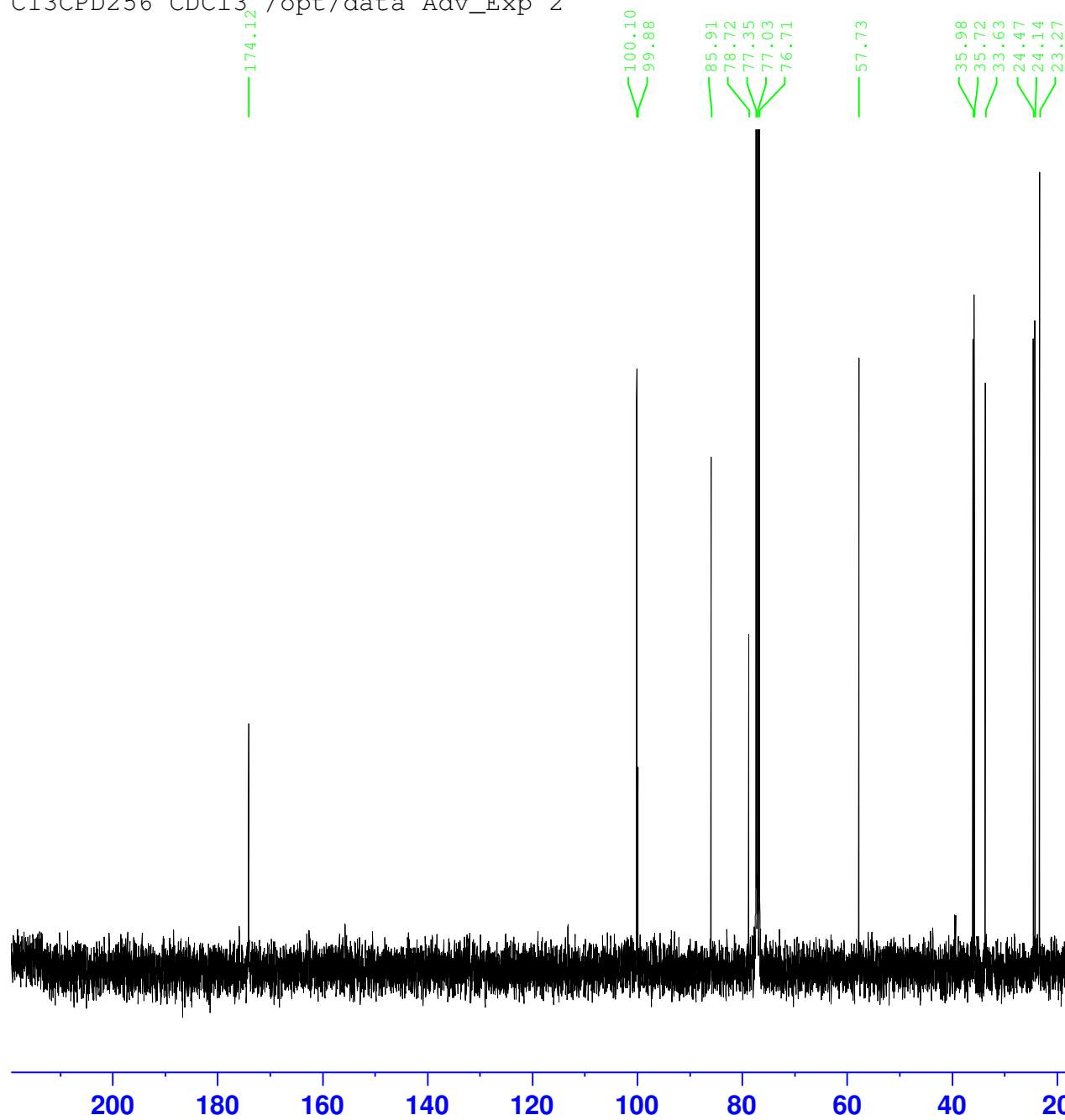


ORG pure pt 2 MSC+WD Carb
C13CPD256 CDC13 /opt/data Adv_Exp 2



Current Data Parameters
NAME X_161017
EXPNO 11
PROCNO 1

F2 - Acquisition Parameters
Date_ 20161017
Time 14.31
INSTRUM aviii400
PROBHD 5 mm PABBO BB-
PULPROG zgpg30
TD 65536
SOLVENT CDC13
NS 256
DS 4
SWH 24038.461 Hz
FIDRES 0.366798 Hz
AQ 1.3631488 sec
RG 1820
DW 20.800 usec
DE 6.50 usec
TE 300.0 K
D1 2.00000000 sec
D11 0.03000000 sec
TD0 1

===== CHANNEL f1 =====
SFO1 100.6404326 MHz
NUC1 13C
P1 9.00 usec
PLW1 50.11899948 W

===== CHANNEL f2 =====
SFO2 400.2016008 MHz
NUC2 1H
CPDPRG[2] waltz16
PCPD2 90.00 usec
PLW2 12.58899975 W
PLW12 0.26631001 W
PLW13 0.21571000 W

F2 - Processing parameters
SI 32768
SF 100.6303700 MHz
WDW EM
SSB 0
LB 1.00 Hz
GB 0
PC 1.40