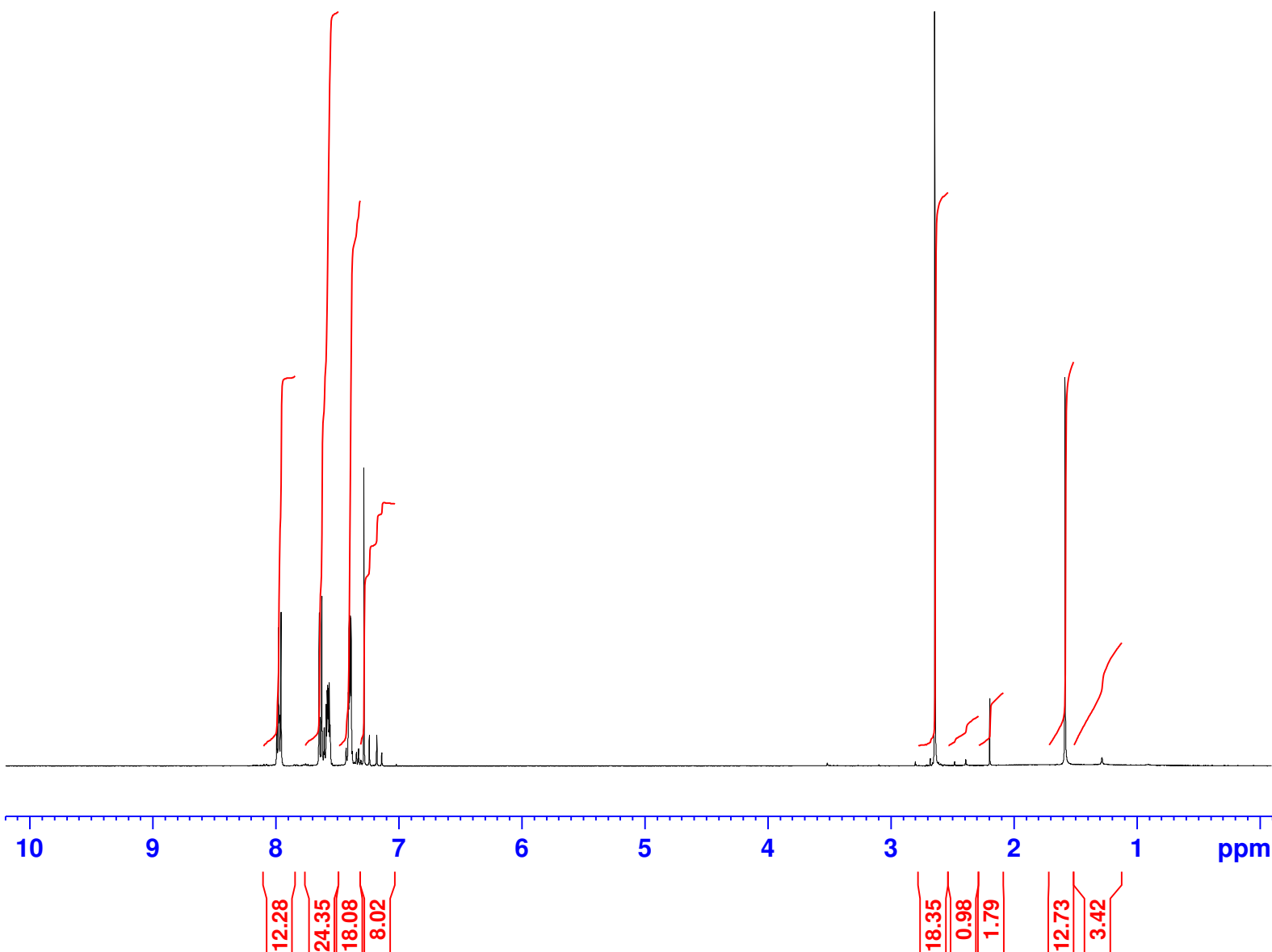


TK 2)ii) Product 2 PURE H
PROTON.qm CDC13 /opt/data Adv_Exp 55



Current Data Parameters
NAME X_161003
EXPNO 80
PROCNO 1

F2 - Acquisition Parameters
Date_ 20161003
Time 17.04
INSTRUM aviii400
PROBHD 5 mm PABBO BB-
PULPROG zg30
TD 65536
SOLVENT CDC13
NS 16
DS 0
SWH 8223.685 Hz
FIDRES 0.125483 Hz
AQ 3.9845889 sec
RG 406
DW 60.800 usec
DE 16.23 usec
TE 300.0 K
D1 1.00000000 sec
TD0 1

===== CHANNEL f1 =====
SFO1 400.2024714 MHz
NUC1 1H
P1 13.09 usec
PLW1 12.58899975 W

F2 - Processing parameters
SI 65536
SF 400.2000000 MHz
WDW EM
SSB 0
LB 0.30 Hz
GB 0
PC 1.00