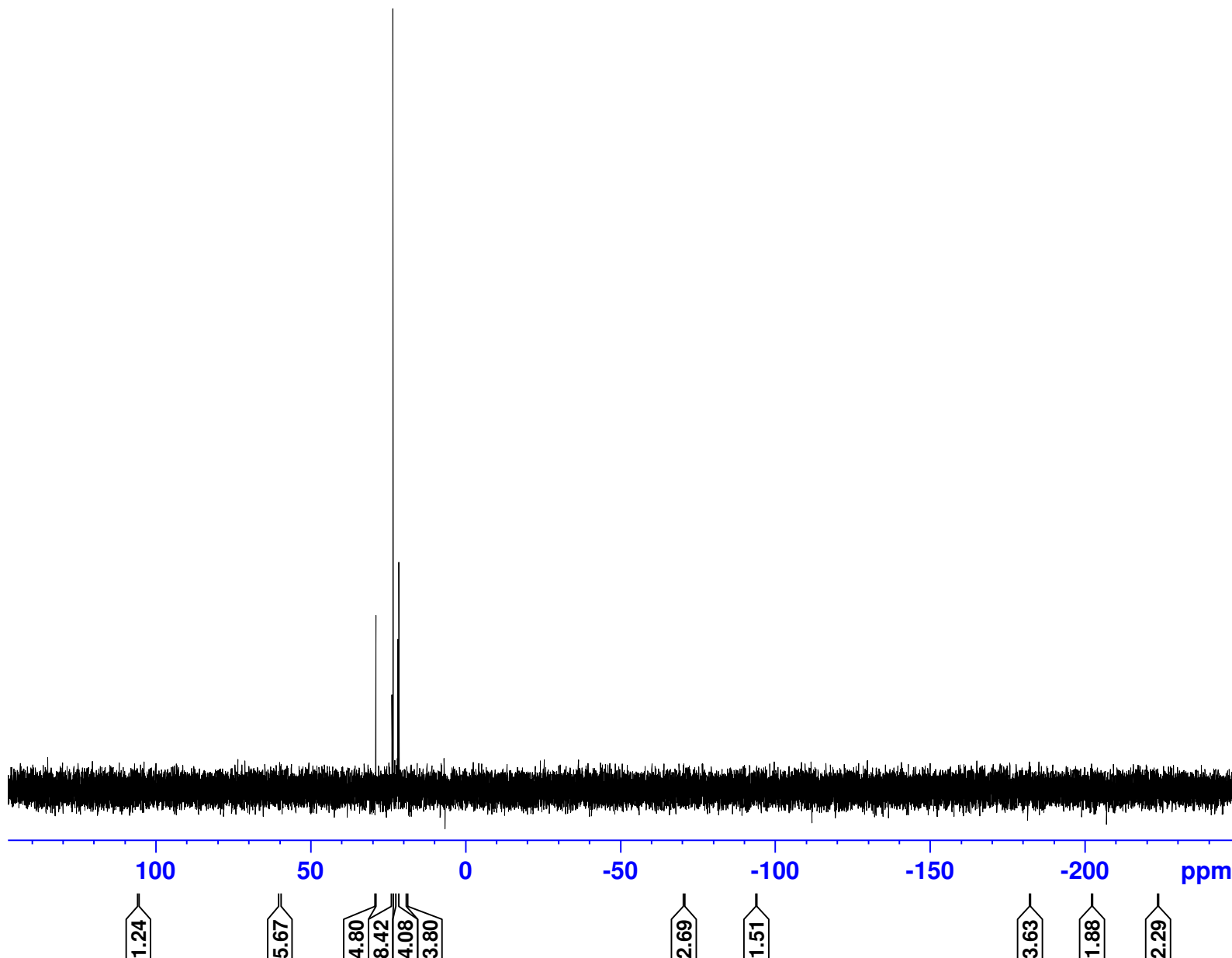


SEH PPh3 alkyne pure 31P A3P  
P31CPD.qm CDC13 /opt/data Adv\_Exp 8

29.14  
23.91  
23.64  
23.61  
23.58  
23.55  
22.00  
21.66



Current Data Parameters  
NAME X\_160929  
EXPNO 242  
PROCNO 1

F2 - Acquisition Parameters  
Date\_ 20160929  
Time 16.48  
INSTRUM aviii400  
PROBHD 5 mm PABBO BB-  
PULPROG zgig  
TD 128198  
SOLVENT CDC13  
NS 32  
DS 2  
SWH 64102.562 Hz  
FIDRES 0.500028 Hz  
AQ 0.9999444 sec  
RG 1620  
DW 7.800 usec  
DE 7.13 usec  
TE 300.0 K  
D1 2.00000000 sec  
D11 0.03000000 sec  
TD0 1

===== CHANNEL f1 =====  
SFO1 161.9958293 MHz  
NUC1 31P  
P1 11.30 usec  
PLW1 19.05500031 W

===== CHANNEL f2 =====  
SFO2 400.2024012 MHz  
NUC2 1H  
CPDPRG[2] waltz16  
PCPD2 90.00 usec  
PLW2 12.58899975 W  
PLW12 0.26631001 W

F2 - Processing parameters  
SI 262144  
SF 162.0039290 MHz  
WDW EM  
SSB 0  
LB 1.00 Hz  
GB 0  
PC 1.40