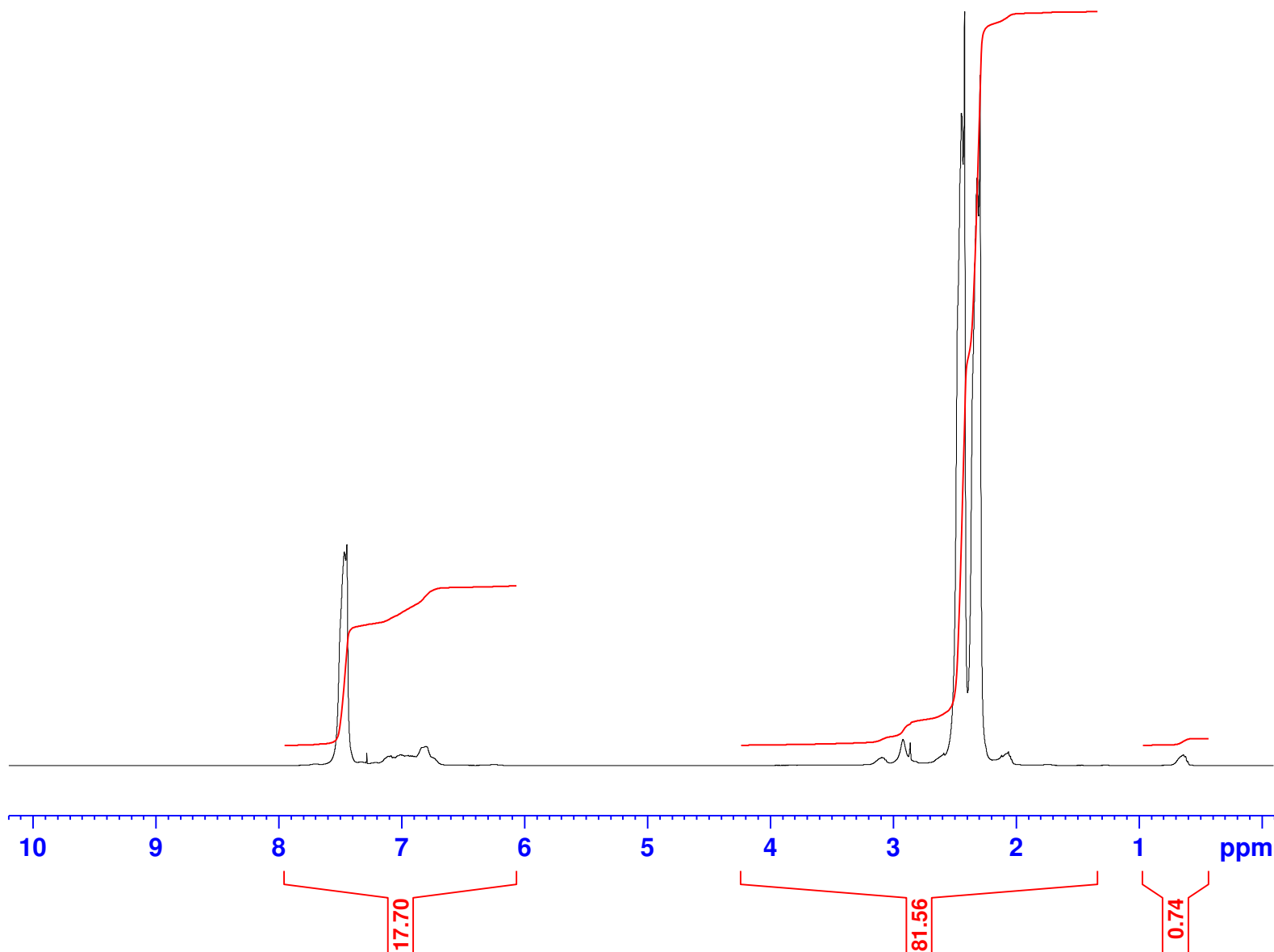


Ismahan Moalin
crude sample of $[\text{PdCl}_2(\text{PPh}_3)_2]$ catalyst used
PROTON.qm CDCl_3 /opt/data Adv_Exp 6



Current Data Parameters
NAME X_160928
EXPNO 90
PROCNO 1

F2 - Acquisition Parameters
Date_ 20160928
Time 11.16
INSTRUM aviii400
PROBHD 5 mm PABBO BB-
PULPROG zg30
TD 65536
SOLVENT CDCl_3
NS 16
DS 0
SWH 8223.685 Hz
FIDRES 0.125483 Hz
AQ 3.9845889 sec
RG 14.2
DW 60.800 usec
DE 16.23 usec
TE 300.0 K
D1 1.00000000 sec
TD0 1

===== CHANNEL f1 =====
SFO1 400.2024714 MHz
NUC1 ^1H
P1 13.09 usec
PLW1 12.58899975 W

F2 - Processing parameters
SI 65536
SF 400.2000000 MHz
WDW EM
SSB 0
LB 0.30 Hz
GB 0
PC 1.00